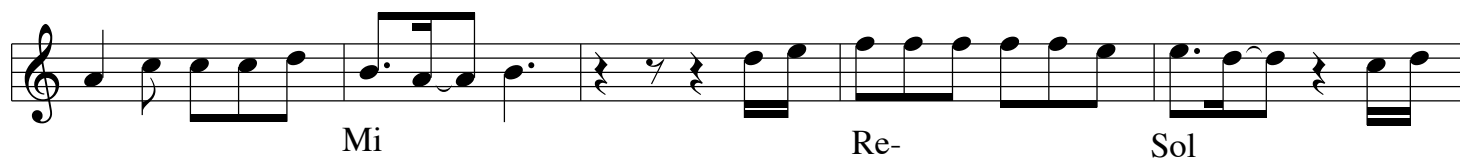
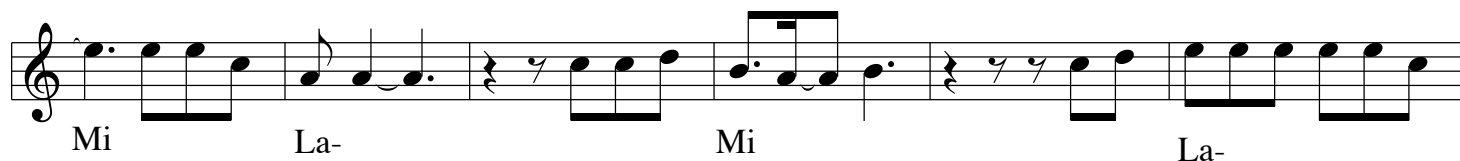
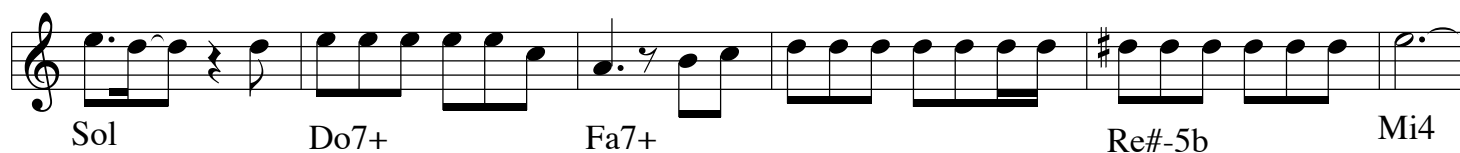
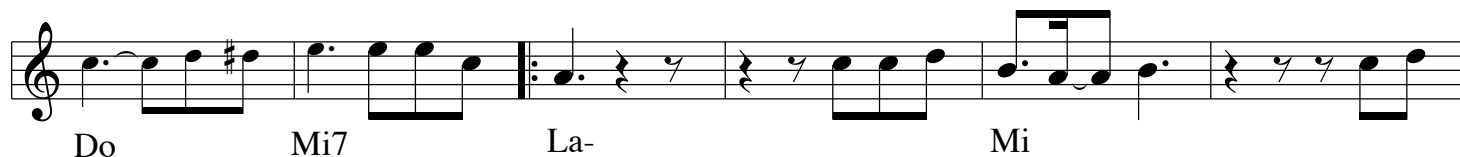


# IL RESPIRO DEL MARE

STRUMENTI in DO



Do7+ Fa7+ Re- Mi La- Sol

Do      Mi7      La-      La      Re-      Sib      Sol4

Sol Mi- La Re- Fa- Do

The first line of musical notation is on a single staff. It begins with a treble clef and a key signature of one flat (B-flat). The melody consists of the following notes: a quarter note D (labeled 'Do'), an eighth note E (labeled 'Re-'), a quarter note F (labeled 'Sol'), and a half note D (labeled 'Do'). This is followed by a first ending bracket containing two measures: the first measure has a quarter rest followed by a quarter note F (labeled 'Fa/Sol'), and the second measure has a quarter rest followed by a quarter note E (labeled 'Fa'). The line ends with a final measure containing a quarter note D (labeled 'Do').